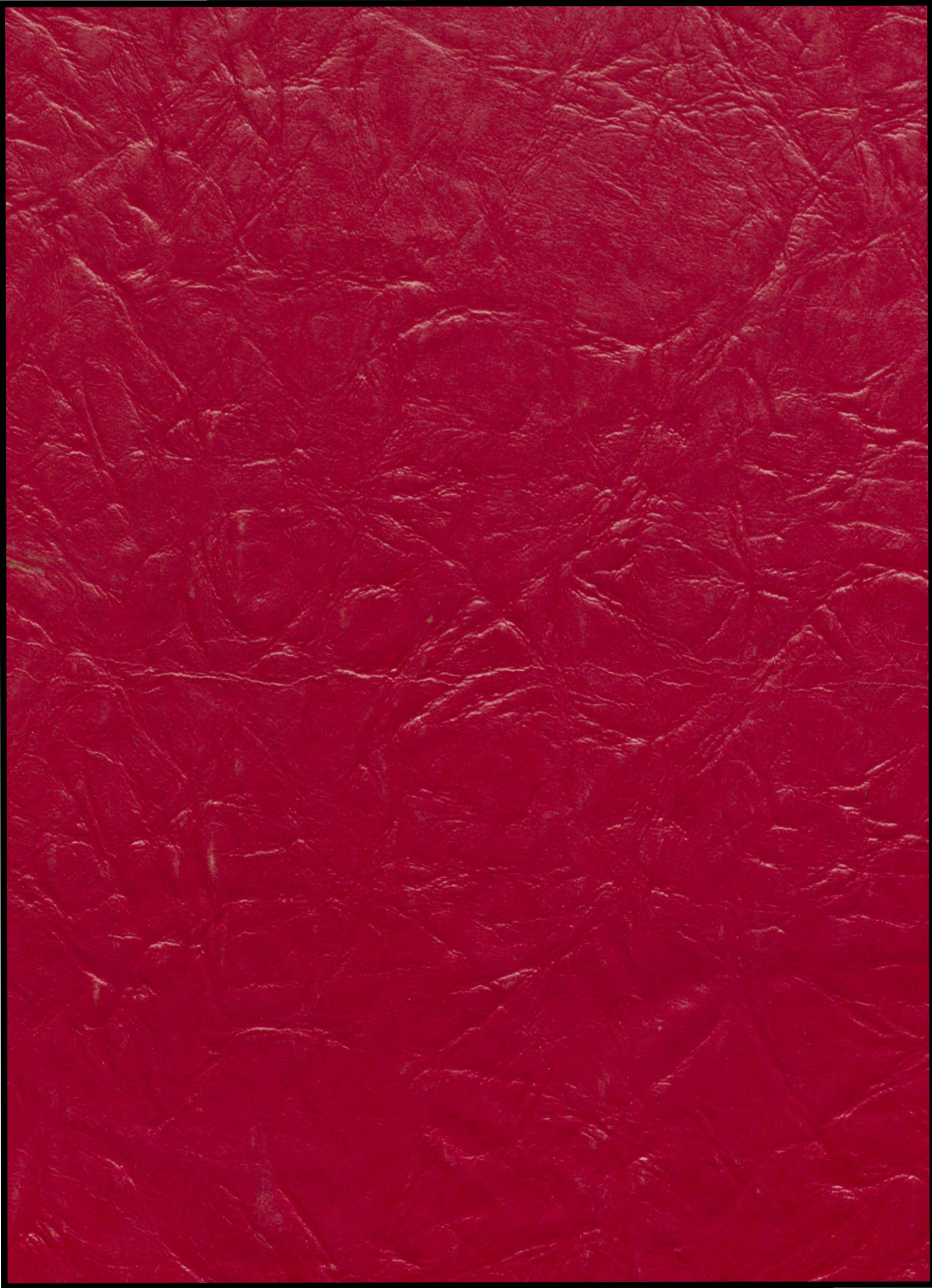


*The  
P. J.  
Raider*

*'48*







# 1948 Raider

Photographs by  
O'Neill Photo Co.  
O'Neill, Nebraska

Published by the  
Students of  
Wagner High School

# Dedication



PAUL LIMOGES

With great appreciation and a hearty thanks, we dedicate to you, Paul, our 1948 Raider.

For six years you have worked for the betterment of Wagner School. All during this time you have been tireless and faithful to your duties as janitor, yet never too busy to give helpful assistance to the students and faculty.

We feel justified in saying that your sunny disposition and cheery whistle have added a ray of sunshine to each school day.

# Administration

## HIGH SCHOOL FACULTY

### BACK ROW:

Virginia Reinecke  
Music  
George Moeller  
Superintendent  
Lucille Krause  
English

### FRONT ROW:

Edward Jaeger  
Agriculture  
Francis Daugherty  
Science, Speech  
Kathleen Gibbs  
Home Economics  
Evelyn Hipple  
Commercial  
Grant Hosterman, Prin.  
Coach, History



## STUDENT COUNCIL

BACK ROW: Kenneth Smith, Myron Engel, Eleanor Carda, LaVerne Andersh, Ernest Alton.

SECOND ROW: Betty Weber, George Krsnak, Norman Gale, Gerrit Heida, Richard Smith, Betty Horner.

FRONT ROW: Mr. Moeller-Supervisor, Maxine Koupal, Douglas Eggers, Clifford Bridge, Mrs. Gibbs-Supervisor.



## GRADE SCHOOL FACULTY

### BACK ROW:

Erna Fuerst  
Fourth and Fifth  
David Brown  
Eighth  
Ann Running  
Seventh

### FRONT ROW:

Esther Dean  
Sixth  
Fern Ramsdell  
Second  
Ardath Alt  
Third and Fourth  
Ruth Skoglund  
First



**DOUGLAS EGGERS**  
(Dude)  
"He is truly a man among men-- and women."  
King, Debate 4  
Declam 4  
Glee Club 2-4  
Football 1-2-3-4  
Basketball 1-2-3-4  
Track 1-3-4  
Annual 3  
Zoanian 3-4  
Plays 3-4  
W Club 1-2-3-4  
Class Officer 1-3-4  
Student Council 3-4

**EILEEN BARTA(Ike)**  
"She says she studies but we wonder."  
Queen, Debate 3  
Declam 1-2  
Band 1-2-3-4  
Glee Club 1-2-3-4  
Chorus 1-2-3-4  
Ensemble 3-4  
Mixed Ensemble 3-4  
GAA 1-2-3-4  
Cheerleader 4  
Annual 4  
Zoanian 2-3-4  
Junior Play  
Pep squad 1-2-3  
Home Ec 1-2-3

# 48' SENIORS

**LAVERNE ANDERSH**  
(Andy)  
"Atom bomb of '48"  
Declam 3-4  
Debate 3-4  
Band 1-2-3-4  
Glee Club 4  
Brass Ensemble 4  
Football 3-4  
Basketball 2-3-4  
Track 3-4  
Annual 4  
Zoanian 2-3-4  
Plays 3-4  
Attendent 2-4  
FFA 4, W Club 3-4  
Phy. Ed. 1-2  
Class Officer 3-4  
Student Council 4

**MARILYN BOYD**  
"She loves her good times."  
Freshman year in Sioux Falls  
Band 2-3-4  
Glee Club 2-3-4  
Chorus 2-3-4  
Solo 3-4  
Ensemble 3-4  
Gaa 2-3-4  
Cheerleader 4  
Annual 4  
Zoanian 3-4  
Attendent 3-4  
Pep squad 3  
Home Ec 2  
Class Officer 3-4  
Student Council 3



**BETTY WEBER**  
"A dandy girl who knows no rest, in every task she does her best."  
Declam 2-3-4  
Debate 2-3-4  
Glee Club 1-2-3-4  
Mixed Ensemble 4  
GAA 2-3-4  
Annual 1-2-3-4  
Zoanian 2-4  
Plays 3-4  
Attendent  
Pep squad 2-3  
Class Officer 4  
Student Council 2-4

**JIMMY JONES**  
"Einstein hasn't anything on him."  
Declam 3-4  
Debate 3-4  
Band 1-2-3-4  
Glee Club 1-2-3-4  
Chorus 2-3-4  
Ensemble 1-2-3-4  
Football 2-3-4  
Basketball 1-2-3-4  
Annual 4  
Zoanian 3-4  
Senior Play  
Attendent 1-2-3



IONA ANDERSON  
(Ione)

"I'm not nearly  
as bashful as I  
seem."

Band 1  
Glee Club 1  
GAA 3-4  
Annual 3-4  
Zoanian 2-3-4  
Pep Squad 3  
Home Ec 1-2

BEVERLY LIMOGES  
(Bev)

"Long, lanky, and  
luscious."

Band 1-2-3-4  
Glee Club 1-2-3-4  
Chorus 3-4  
Solo 1-2-4  
Ensemble 4  
Mixed Ensemble 4  
Annual 1-3-4  
Zoanian 2-3-4  
Junior Play  
Pep Squad 3  
Home Ec 1-2



# Seniors '48



RICHARD SMITH  
(Rick)  
"Just give me an  
audience--I'll  
rave."  
Declam 3-4  
Debate 3-4  
Band 1  
Glee Club 1-2-3-4  
Chorus 1-2-3  
Football 1-2-3-4  
Basketball 1-2-3-4  
Baseball 2  
W Club 2-3-4

FLORENCE DENEUI  
(Flo)  
"There's a flirty  
look in her eye."  
Declam 3-4  
Debate 3-4  
GAA 1-2-3  
Annual 3-4  
Zoanian 3-4  
Senior Play  
Pep Squad 2-3  
Home Ec 1-2



MAXINE KOUPAL  
(Max)  
"A giggle is  
worth a million  
groans."  
Declam 3-4  
Debate 3-4  
Glee Club 1-2-3-4  
Chorus 2-3-4  
Ensemble 4  
GAA 1-2-3-4  
Annual 1  
Zoanian 1-2-4  
Senior Play  
Pep Squad 3  
Home Ec 1-2  
Class Officer 1-2-3  
Student Council  
1-4

RAYMOND NOVAK  
(Ray)  
"Get me a poser,  
hand me my  
camera, and I'm  
content."  
Declam 1-3-4  
Debate 1-2-3-4  
Glee Club 1  
Chorus 1  
Annual 4  
Zoanian 2-3-4  
Senior Play  
Class Officer 1



CAROL YUNGBLUTH

"I'm hungry."  
 Band 1-2-3-4  
 Glee Club 1-2-3-4  
 Chorus 2-3-4  
 Solo 1-4  
 Ensemble 4  
 GAA 1-2-3-4  
 Annual 3-4  
 Zoanian 2-3-4  
 Junior Play  
 Attendent 2  
 Home Ec. 1-2  
 Class Officer 2-3  
 Student Council 3

MAVIS KUCA

"Her work suits  
 the most parti-  
 cular."  
 Declam 1-3-4  
 Debate 4  
 Band 1-2-3-4  
 Glee Club 1-2-3-4  
 Chorus 2-3-4  
 Annual 3-4  
 Zoanian 2-4  
 Senior Play 4  
 Pep Squad 2-3  
 Home Ec 1-2  
 Brass Ensemble 4

# 48 Seniors

JOE HOLZBAUER

"Better late than  
 never."  
 Declam 3  
 Debate 3  
 Band 1-2  
 Glee Club 1-2  
 Chorus 1-2  
 Football 3  
 Zoanian 4  
 FFA 4

FLORENCE KOSTEL

"Her personality  
 giggle and smile  
 are of her own  
 distinctive  
 style."  
 Band 1-2-3-4  
 Glee Club 1-2-3-4  
 Ensemble 4  
 Zoanian 3-4  
 Senior Play  
 Pep Squad 3  
 Home Ec 1-2

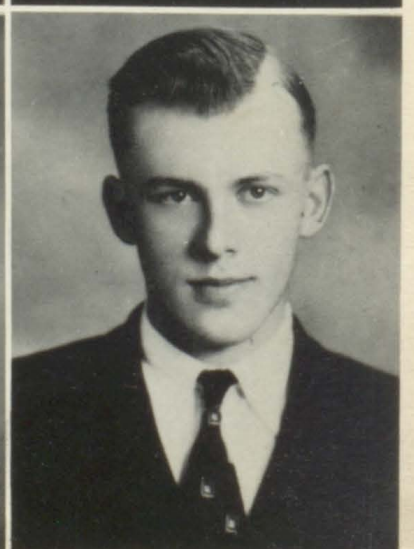


LOIS WOODS

"No matter where  
 or when she is  
 always a lady."  
 Declam 3-4  
 Debate 3-4  
 Glee Club 1-2-3-4  
 Chorus 4  
 GAA 2-3-4  
 Zoanian 4

JAMES ANDERSH  
 (Jim)

"A pin-drop would  
 make more noise  
 than he does."  
 Band 1-2-3-4  
 Basketball 1-3  
 Track 3  
 Zoanian 4  
 FFA 4





NORMAN GALE (Les)  
 "You ain't heard  
 nothing yet."  
 Declam 4, Debate 4  
 Glee Club 1-2-3-4  
 Chorus 1-2-3-4  
 Solo 1-2-3-4  
 Ensemble 3-4  
 M. Ensemble 1-2-3-4  
 Football 1-2-3-4  
 Basketball 1-2-3-4  
 Track 1-2-3-4  
 Baseball 2  
 Annual 3-4  
 Zoanian 2-3-4  
 Plays 3-4, FFA 4  
 W Club 2-3-4  
 Student Council 4

GERALD HARRINGTON  
 (Tub)  
 "He has high  
 'blond' pressure!"  
 Declam 4  
 Debate 4  
 Football 1-2-3-4  
 Basketball 2-3-4  
 Track 1-2  
 Baseball 1-2  
 Annual 4  
 Zoanian 4  
 W Club 3-4



# Seniors '48



LARRY PESHEK

EVELYN CARDA (Ev)

"Well, they lose  
 me this year."  
 Declam 4  
 Debate 4  
 Band 3-4  
 Chorus 2-3-4  
 Football 2-4  
 Track 4  
 Zoanian 4  
 Attendent 1

"Good-natured,  
 that's me."  
 Declam 4  
 Debate 4  
 Glee Club 1  
 GAA 1-2-3-4  
 Zoanian 4  
 Senior Play  
 Home Ec 1



ELEANOR CARDA

MARCUS GOLDHAMMER  
 (Mike)

"Put your troubles  
 in a pocket with  
 a hole in it."  
 Declam 4  
 Debate 4  
 Glee Club 1  
 GAA 1-2-3-4  
 Zoanian 4  
 Home Ec. 1  
 Student Council 4

"Our Mr. Fix-it  
 man."  
 First three years  
 in Tyndall  
 Declam 4  
 Debate 4  
 Zoanian 4



KLETA UECKER  
 "Sweet but taken."  
 Band 1-2-3-4  
 Glee Club 1-4  
 Chorus 4  
 GAA 3-4  
 Annual 3  
 Zoanian 4  
 Pep Squad 2-3  
 Home Ec 1-2

THELMA STONE  
 (Jean)  
 "Mild in manner  
 abundant in  
 charm."  
 Declam 4  
 Glee Club 1-2-3-4  
 Chorus 3-4  
 Solo 1  
 GAA 2-3-4  
 Annual 3-4  
 Zoanian 2-3-4  
 Junior Play  
 Attendent 2-3  
 Pep Squad 2-3  
 Home Ec 1-2

# 48 Seniors

ROBERT KUCA  
 (Bob)  
 "Quiet, but most  
 reliable."  
 Band 1-2-3-4  
 Glee Club 2  
 Chorus 2  
 Zoanian 4



BETTY  
 HONOMICHL  
 "True to her work  
 and her friends"  
 Declam 4  
 Debate 4  
 Band 1-2  
 Glee Club 1-2-4  
 Chorus 4  
 GAA-1-2  
 Annual 4  
 Zoanian 4  
 Sr. Play  
 Home Ec 1-2

DELORES ZACHARIAS  
 "She tries to be  
 dignified but  
 her actions  
 betray her."  
 Declam 4  
 Debate 4  
 Glee Club 1-4  
 GAA 1-2-3-4  
 Annual 2-3-4  
 Zoanian 2-3-4  
 Senior Play  
 Pep Squad 1-3  
 Home Ec 1-2





Ray Novak



Mavis Kuca



Florence Kostel

We have come a long way since the pictures on this page were taken. We're even changed a little since that day in 1944 when we first came to Wagner High School, frightened but hopeful.

In our freshman year we were initiated by the seniors of '45. We resembled people from another world but it was fun.

During our sophomore year we started the practice of going all out for activities that has characterized our class since. We did a lot of work, had a lot of fun, and hoped our senior year would hurry.

Suddenly we were juniors. Our class float tied with the senior's for first place in the homecoming parade. We worked hard on our play "Flyin' High" which was a success. One evening in May the boys put on their best suits and the girls their new formals. Why? They were going to the Stork Club. The juniors proudly patted themselves on the back as the junior-senior prom and banquet were a great success.

On September 2, 1947 we came back to school again, only this time it was much different from other years. We were seniors. This year our float with the theme of "Excelsior" took first prize in the homecoming parade. The senior play was "Bear Deception." After that came skip day and the prom. Last but not least came graduation. We were glad but sorry too.

Yes, we've changed since that fall day in '44 and now we feel prepared to shoulder our full responsibilities as men and women of the world.



LaVerne Andersh



Marilyn Boyd



Betty Weber



Iona Anderson

# Junior



JOYCE AILTS  
ALLEN ANDRESH



DONALD ANDRESH *Don*  
ALICE BARNARD

JOYCE BRADLEY  
CLIFFORD BRIDGE *Tip*  
ALYCE BRODSKY



ROBERT BROZ  
DONNA BURIAN  
EVELYN COLES *Evie*



ARBUTUS DAVIS *Bootie*  
BETTY DUNCAN  
GERRIT HEIDA



# Class



BILL KAFKA  
 GENEVIEVE KOPECKY *Genevieve*  
 GEORGE KRŠNAK



PAULINE McDONALD *Mac*  
 DONNA O'CONNELL  
 RAYMOND REZAC *Ray*

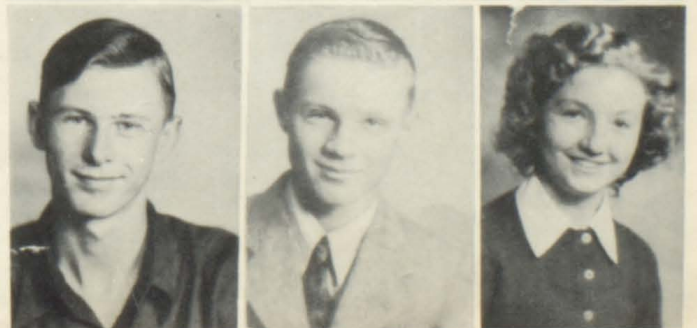
BOB SALTZMAN  
 ELEANOR SEALEY  
 FRANCES SLAMA



VERNON STEDKONSKY *no 65 e*  
 YVONNE STONE *Yvonne*  
 VINE ST. PIERRE



DONALD SUNDAHL  
 CLARENCE UHERKA  
 CLARA WEICHMANN



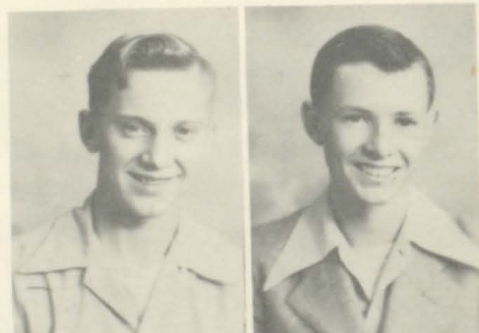
# Sophomores



MARGARET ALTON "*Maggie*"  
 ROBERT ANDERSH "*Bob*"  
 VIOLA ANDERSH "*Vi*"



DICK BARTA "*Dick*"  
 WAYNE BEEMER "*Beemer*"  
 ILA BENSON "*Ila*"



RICHARD BURIAN "*Rick*"  
 KENNETH CONNELLY "*Kennie*"



RICHARD DOTY "*Casey*"  
 MARILYN EGGERS "*Maggie*"  
 DONALD FREDERICK "*Doc*"



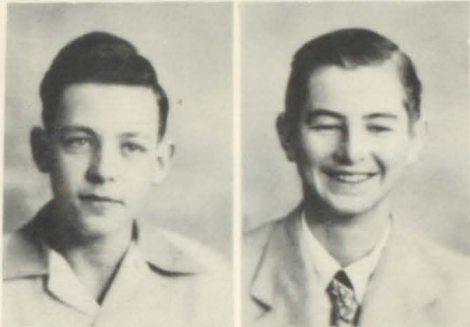
RICHARD GALE "*Hale*"  
 MARLYN GOLDHAMMER "*Holla*"  
 LEO GRIM "*Doc*"



ROSEMARY HUZUKA "*Rosie*"  
 IRIS HATWAN "*Iris*"  
 FRANCES HONOMICHL "*Frances*"



BETTY HORNER "*Betty Ann*"  
 SHIRLEY KINDER "*Shirley*"  
 DARRELL LIMOGES "*Darrell*"



JUNIOR NIELSEN "*Junior*"  
 ROBERT PETRIK "*Pete*"

DARLENE REINSCHMIDT "*Darlene*"  
 ERLENE SCHWARTZ "*Erlene*"  
 JEANNE ANN SELLERS "*Jeanne Ann*"



BERNARD STEPINE "*Bernard*"  
 THOMAS STONE "*Tom*"  
 ILAH UECHER "*Ilah*"



MAYNARD VESPER "*Maynard*"  
 RUTH VOGEL "*Ruth*"  
 JOHN WEBER "*J.W.*"



# Freshmen



" MAYME ANDERSH  
" ARLENE BARTUNEK



RAYMOND BRODSKY  
" NORMA BROZ  
LOYSON CARDA "Red"



LOIS CERMAK "

" DENIS CUKA  
" Frankie FRANCIS CUKA  
SAM DENEUI  
"Sammy"



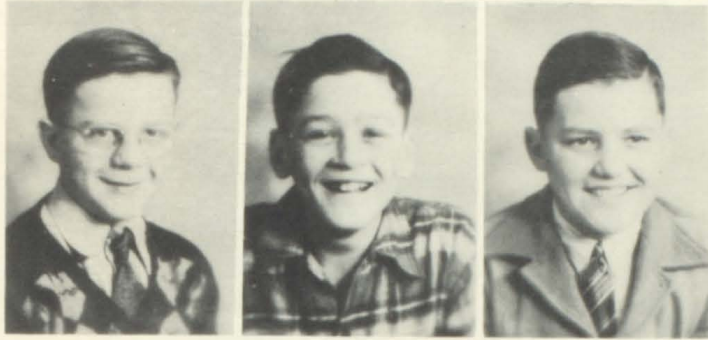
JAMES CROFUTT "Jimmy"  
" SUE EHRISMAN  
BEVERLY HABEGER  
"Bev"







"NORMA" HARRINGTON  
"MONA" HATFIELD



"DICK" HOFFMAN  
"AL" ALOYSUIS HOLZBAUER  
"FRANKLIN" HOMOLKA

"IRENE" KOSTEL  
"DALE" MARTIN

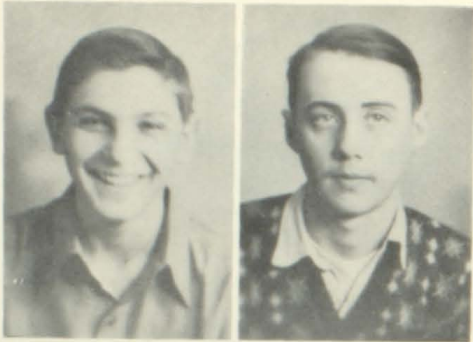


"HAZEL" McCORMICK  
"WALDEN" McFARLAND  
FRANK MELMER  
*"Frankie"*

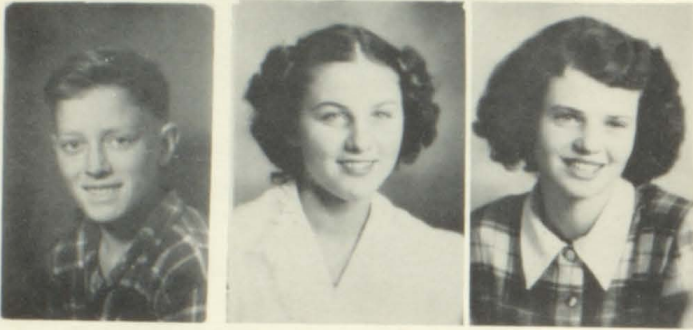


DOROTHY MYERS  
RICHARD REINHART  
ELAINE MATTIS





DOYLE REINSCHMIDT  
CLARENCE ROBERTSON



*Kenney*  
KENNETH SMITH  
ELEANOR SOUKUP  
JOYCE STONE

"CAROL MAE SYKORA



*"Smiley"*  
LEONARD THALER  
JANICE TROXELL  
LAFAYE TUFTY



"PATTY WEBER  
*"Louie"* LEWIS WHITNEY  
JOE ZACHARIAS  
*"Joey"*



# Graders



EIGHTH GRADE

BACK ROW--Mr. Brown-Teacher, Theresa Melmer, June Ree, Janis Trantina  
June Davis, JoAnn Pesicka

MIDDLE ROW--Betty Pesicka, Connie Kostel, Clarice Rohla, JoAnn Broz,  
Myrna Connelly, June O'Connell

FRONT ROW--Frank Strohbehn, Myron Engel, Earl Middleton, Lawrence Vogel,  
Bob Myers, Douglas Chapman, Durward Crisman, Absentee--Mary Lou DeVries



SEVENTH GRADE

BACK ROW: Newell McDonald, Richard McCarthy, Ernest Alton, Donald Gasper,  
Donald Habeger, DeWayne Honomichl, Dick Sykora. MIDDLE ROW: Miss Running,  
Paul Goldhammer, Jerry Broz, Bertie Schultz, Thomas Efta, Donald Schwartz,  
Keith Connelly. FRONT ROW: Dean Heida, Shirley McCormick, Kleta Crisman,  
Betty Bucholz, Janice Saltzman, Donna Greger, Betty Hoffman, Alvin Bridge.

# Homecoming



# Athletics



Genivieve  
Kopecky



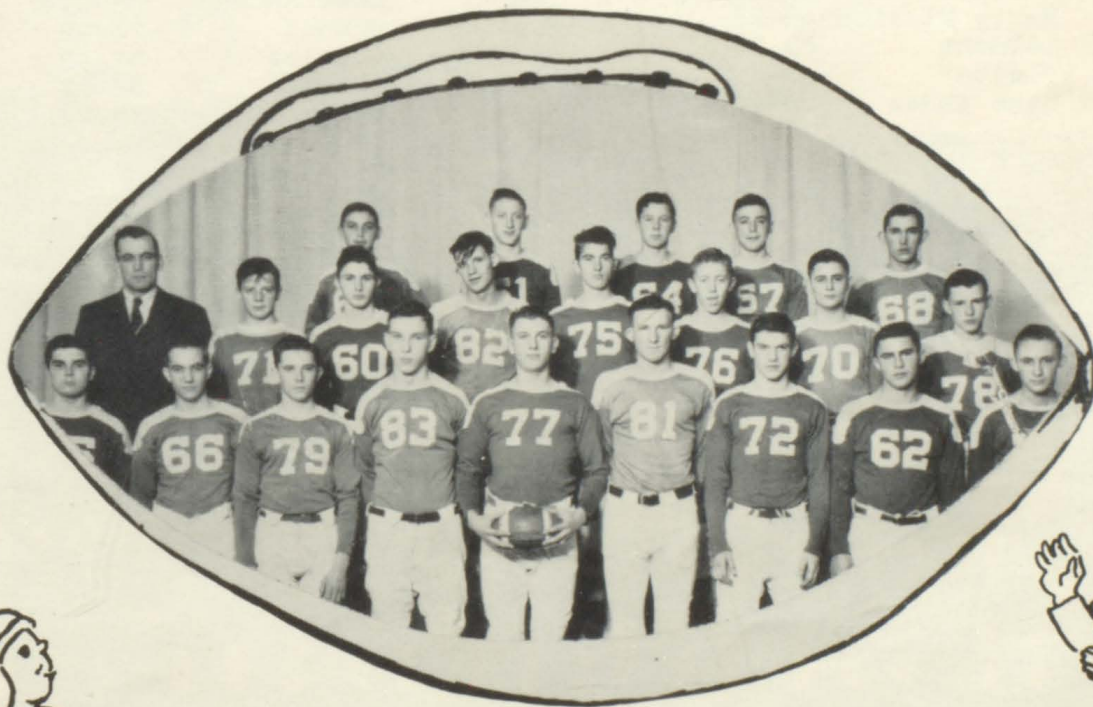
Marilyn  
Boyd



Marilyn  
Eggers



Eileen  
Barta



BACK ROW: Hosterman, Coach, Reinschmidt, Engle,  
Brodsky, MacFarland, Weber  
MIDDLE ROW: Hoffman, Grim, Gale, Peshek, Smith  
Jones, Connelly  
FRONT ROW: Rezac, Harrington, Andersh, Stedron-  
sky, Eggers, Gale, Heida, Bridge, Goldhammer



# Basketball



HOME	
Geddes	50-23
Corsica	32-27
Armour	51-29
Ravinia	69-25
Marty Mission	48-23
Delmont	59-37
Platte	40-34
Lake Andes	53-40

OUT OF TOWN	
Marty Mission	31-30
Platte	26-56
Delmont	31-43
Lake Andes	38-47
Geddes	73-29
Corsica	37-42
Armour	33-32
Ravinia	73-24



BACK ROW--Mr. Hosterman, Andersh, Limoges, Smith, Andersh, Brodsky, Carda, Barta.  
 MIDDLE ROW--Stone, Neilson, Andersh, Engel, Robertson, Melmer, Hoffman, Jones, Andersh.  
 FRONT ROW AND FIRST TEN--Krsnak, Fredericks, Heida, Stedronsky, Eggers, Bridge, Goldhammer, Smith, Connelly.

*Jr High  
Basketball*



BACK ROW: Alton, Gasper, Middleton, Crisman, Strohbahn  
 MIDDLE ROW: Heida, Vogel, McCarthy, Schwartz, Connelly,  
 Mr. Brown  
 FRONT ROW: Broz, Chapman, Bridge, Honomichl, Meyers, Bridge  
 CHEERLEADERS: Connie Kostel, Clarice Rohla, June O'Connell



*Track*

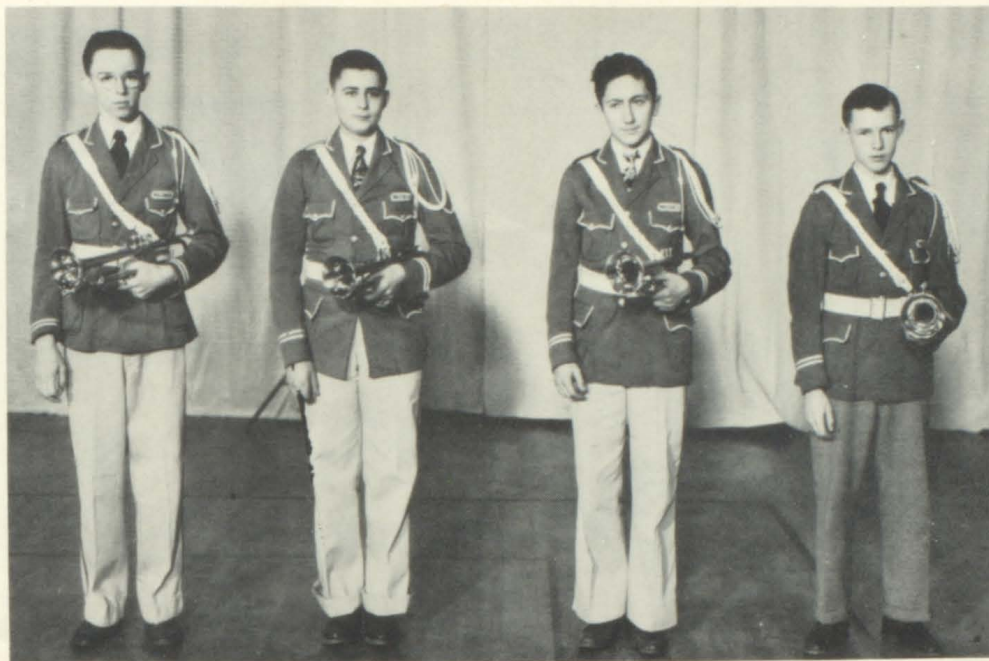
BACK ROW: Robertson, Hoffman, Peshek, Grim, Andersh  
 MIDDLE ROW: Mr. Hosterman, Fredericks, Smith, Gold-  
 hammer, Connelly, Andersh  
 FRONT ROW: Heida, Eggers, Gale, Bridge, Andersh

# GAA



FOURTH ROW: Cermak, Burian, Sealey, Broz, Sellers, Sykora, Honomichl, Bradley, Woods, Ailts, Stone, Stone, Wiechmann, Hatwan.  
THIRD ROW: Stone, Davis, Boyd, O'Connell, Weber, Weber, Anderson, Brodsky, Uecker, Uecker, Benson, Andersh.  
SECOND ROW: Mrs. Gibbs, McDonald, Barnard, Ehrisman, Meyers, Eggers, Koupal, Rheinschmidt, Andersh, Coles, Barta, Carda.  
FIRST ROW: Troxell, Slama, Schwartz, Horner, Tufty, Hatfield, Kopecky, Bartunek, Harrington, Soukup, McCormick, Yungbluth.





Frank  
Melmer

Jimmie  
Jones

George  
Krsnak

Kenneth  
Connelly

# Music



## BAND PERSONNEL

DIRECTOR--Miss Reinecke

FLUTE--Beverly Limoges, Darrell Limoges. OBOE--Jerry Broz.  
 CLARINET--Erlene Schwartz, Evelyn Coles, Bill Kafka, Alice  
 Barnard, Viola Andersh, Janice Trantina.  
 ALTO SAXOPHONE--Robert Kuca, Allen Andersh, Donald Andersh.  
 TENOR SAXOPHONE--Marilyn Eggers. BASSOON--Betty Duncan.  
 CORNET--George Krsnak, Kenneth Connelly(not pictured),  
 Jimmie Jones, Frank Melmer, Junior Neilsen, Keith Connelly,  
 Dick Barta, Kleta Uecker, LaFaye Tufty.  
 FRENCH HORN--June O'Connell, Carol Yungbluth, Mayme Andersh.  
 TROMBONE--Vernon Stedronsky, Ray Rezac(not pictured),  
 BARITONE--Mavis Kuca, Myron Engel, Clarence Uherka, Yvonne  
 Stone.  
 BASS--LaVerne Andersh, James Andersh.  
 PERCUSSION SECTION--Marilyn Boyd, Eileen Barta, Florence  
 Kostel, Larry Peshek(not pictured), Fella Strohbehn.

# Ensembles



GIRLS ENSEMBLE  
 Beverly Limoges  
 Eileen Barta  
 Florence Kostel  
 Betty Weber  
 Carol Yungbluth  
 Erlene Schwartz  
 Maxine Koupal  
 Marilyn Boyd

MIXED ENSEMBLE  
 Eileen Barta  
 Beverly Limoges  
 Vernon Stedronsky  
 Norman Gale  
 George Krsnak  
 Darrell Limoges  
 Marilyn Boyd  
 Betty Weber



BOYS ENSEMBLE  
 Vernon Stedronsky  
 Gerrit Heida  
 Norman Gale  
 Raymond Rezak  
 George Krsnak  
 Kenneth Connelly  
 Junior Neilson  
 Darrell Limoges

BRASS



ENSEMBLE

George Krsnak, Kenneth Connelly, June O'Connell, LaVerne Andersh, Vernon Stedronsky, Mavis Kuca.

REGIONAL



SOLOISTS

BACK ROW: Kenneth Connelly, George Krsnak, Vernon Stedronsky, Beverly Limoges, Erlene Schwartz  
FRONT ROW: Norman Gale, Betty Weber, Marilyn Boyd, Eileen Barta, Gerrit Heida

MIXED



CHORUS

BACK ROW: Junior Neilson, Darrell Limoges, Douglas Eggers, Vernon Stedronsky, Richard Gale, Larry Peshek, Frank Melmer, Ray Rezac, Denis Cuka.  
SECOND ROW: Dick Barta, Clifford Bridge, Gerrit Heida, Norman Gale, Jimmie Jones, George Krsnak, Bill Kafka, Kenneth Connelly.  
THIRD ROW: Maxine Koupal, Thelma Stone, Lois Woods, Eileen Barta, Jeanne Sellers, Betty Honomichl, Beverly Limoges, Florence Kostel, Patty Weber, Kleta Uecker.  
FRONT ROW: Maxine Mitchell-Accompanist, Frances Slama, Mavis Kuca, Donna O'Connell, Marilyn Boyd, Marilyn Eggers, Alice Barnard, Betty Horner, Erlene Schwartz, Betty Weber, Carol Yungbluth, Miss Reinecke-director.

# Glee Clubs



BACK ROW: Elaine Mattis, Irene Kostel, Delores Zacharias, Betty Honomichl, Carol Sykora, Eileen Barta, Lois Woods, Marilyn Eggers.

THIRD ROW: Darlene Reinschmidt, Eleanor Sealey, Frances Honomichl, Jeanne Sellers, Beverly Limoges, Thelma Stone, Margaret Alton, Kleta Uecker, Viola Andersh.

SECOND ROW: Alice Barnard, Sue Ehrismann, Marilyn Boyd, Donna O'Connell, Patty Weber, Maxine Koupal, Florence Kostel, Betty Weber, LaFaye Tufty, Mayme Andersh.

FIRST ROW: Maxine Mitchell-Accompanist, Frances Slama, Mavis Kuca, Eleanor Soukup, Betty Horner, Erlene Schwartz, Dorothy Myers, Janice Troxell, Beverly Habeger, Carol Yungbluth, Miss Reinecke-Director.



BACK ROW: Frank Melmer, Larry Peshek, Vernon Stedronsky, Norman Gale, Gerrit Heida.

THIRD ROW: Kenneth Connelly, Raymond Rezac, Richard Gale, Bill Kafka, Denis Cuka, Bernard Stepina, Thomas Stone.

SECOND ROW: Maxine Mitchell-Accompanist, LaVerne Andersh, George Krsnak, Jimmie Jones, Richard Smith, Clarence Robinson, Miss Reinecke-Director.

FIRST ROW: Richard Barta, Junior Neilson, Darrell Limoges, Douglas Eggers, Clifford Bridge, Joe Zacharias.

# Band C Band



**FIFTH ROW:** Hazel McCormick, Eleanor Soukup, Darlene Reinschmidt, Francis Honomichl, Irene Kostel, Norma Broz, Carol Sykora, Dorothy Myers, Patty Weber, Joyce Stone, Janice Troxell, Frances Slama.  
**FOURTH ROW:** James Crofutt, Leonard Thaler, Dale Martin, Franklin Homolka, Robert Andersh, Robert Petrik, Kenneth Smith, Loyson Carda, Clayton Dostal, Denis Cuka.  
**THIRD ROW:** Francis Cuka, Thomas Stone, Joyce Weber, Myrna Youngbluth, Marla Payer, Marlene Jespersen, JoAnn Broz, Myrna Connelly, Theresa Melmer, JoAnn Pesicka, Ila Benson, Clarice Rohla, Connie Kostel, Durward Crisman.  
**SECOND ROW:** Miss Reinecke-Director, Scott Scobell, Robert Smith, Garet Wollman, Jimmie Von Eschen, David Knight, Craig Hosterman, John Schuldt, LaVerne Novak, Norma Buus, Ethel Ellwein, Rose Marie Stedronsky.  
**FIRST ROW:** Cheryl Duncanson, Deanna Duncanson, Valda Ann Strohhohn, Joan Stedronsky, Lona Carda, Diana Bastemeyer, Reta Hoover, Wilma Vander Vort, Donna Moeller, Janis Swartz, Lorna Crabb, Ruth Anderson.

# Speech



*Declam*

FIFTH ROW: Iris Hatwan, Betty Honomichl, Mayme Andersh.  
 FOURTH ROW: Lois Woods, Evelyn Carda, Delores Zacharias, Larry Peshek, Jeanne Sellers, Carol Mae Sykora.  
 THIRD ROW: Miss Dougherty, Janice Troxell, Pat Weber, Jimmie Jones, Florence DeNeui, Louis Whitney, Mr. Moeller.  
 SECOND ROW: Miss Krause, Bill Kafka, George Krsnak, Norman Gale, Douglas Eggers, Raymond Novak, Gerald Harrington.  
 FIRST ROW: LaVerne Andersh, Arlene Bartunek, Ruth Vogel, Maxine Koupal Betty Weber, Mavis Kuca, Thelma Stone, Richard Smith.

*Debate*



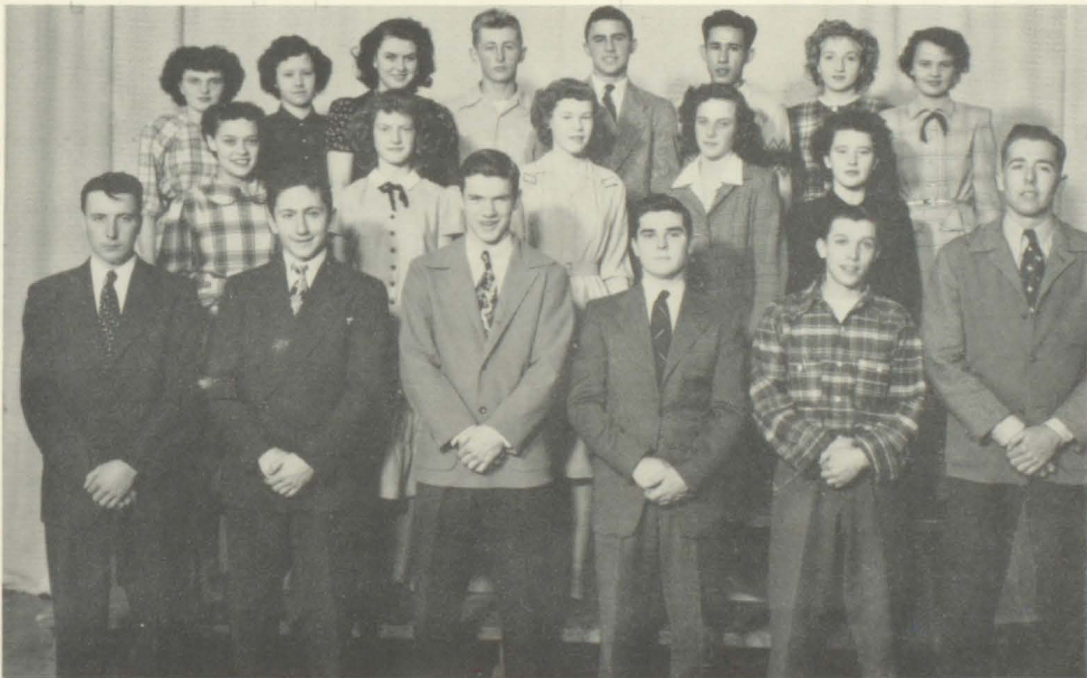
FOURTH ROW: Lois Woods, Evelyn Carda, Delores Zacharias, Larry Peshek, Ray Novak, Denis Cuka.  
 THIRD ROW: Bill Kafka, LaVerne Andersh, Jimmie Jones, Richard Smith, Gerald Harrington, Louis Whitney.  
 SECOND ROW: Miss Dougherty, George Krsnak, Norman Gale, Vernon Stedronsky, Douglas Eggers, Gerrit Heida.  
 FIRST ROW: Loyson Carda, Pauline McDonald, Betty Weber, Maxine Koupal, Florence DeNeui, Mavis Kuca, Betty Honomichl.

# Plays



## A BEAR DECEPTION (Senior Play)

BACK ROW: Miss Krause-Director, Richard Smith, Jimmie Jones, Douglas Eggers, Norman Gale, Raymond Novak, LaVerne Andersh.  
FIRST ROW: Mavis Kuca, Florence DeNeui, Evelyn Carda, Betty Honomichl, Delores Zacharias, Florence Kostel, Maxine Koupal, Betty Weber.



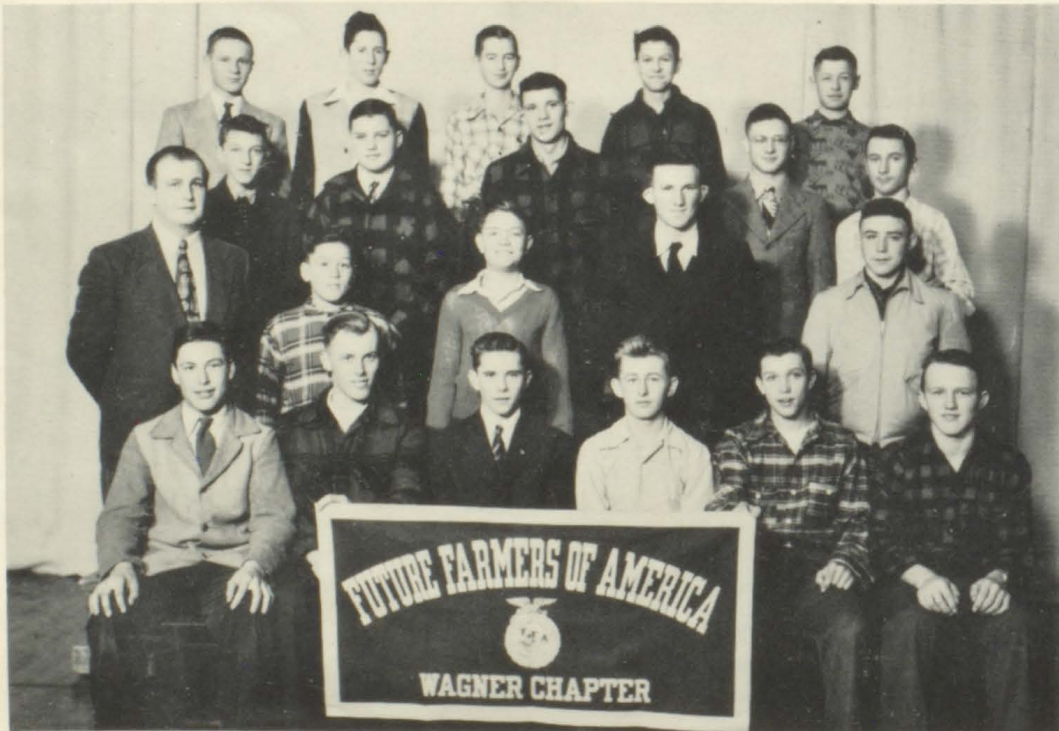
## THREE'S A CROWD (Junior Play)

BACK ROW: Frances Slama, Alice Brodsky, Eleanor Sealey, Donald Andersh, Clifford Bridge, Vine St. Pierre, Clara Wiechmann, Evelyn Coles.  
SECOND ROW: Alice Barnard, Pauline McDonald, Joyce Ailts, Yvonne Stone, Joyce Bradley.  
FIRST ROW: Bill Kafka, George Krsnak, Gerrit Heida, Raymond Rezac, Allan Andersh, Mr. Brown-Director.

# BOY SCOUTS



TOP ROW: Ken Connelly, John Weber, Dick Barta, Darrell Limoges, Leo Grim, Myron Engel, Dick Hoffman, Durward Crisman.  
 MIDDLE ROW: James Crofutt, Bill Stitsworth, Paul Goldhammer, Don Habeger, Jerry Broz, Donald Gasper, Keith Connelly, Dick Sykora.  
 BOTTOM ROW: Mr. Jaeger, Scout Master: Jim Sellers, Lyle Davis, Marshall Hatfield, LaVerne Novak, John Schuldt, Syllas Hatfield, Larry Mierose, Bob Frei, Scout Master.



# FFA

F F A

(Future Farmers of America or Five Famous Andershes)  
 TOP ROW: Clarence Uherka, Tom Stone, Robert Petrik, Maynard Vesper, Leonard Thaler.  
 SECOND ROW: Joe Zacharias, Frank Homolka, Richard Gale, Denis Cuka, Clayton Dostal.  
 THIRD ROW: Mr. Jaeger, Teacher: Aloysious Holzbauer, Robert Broz, Norman Gale, Waldon McFarland.  
 BOTTOM ROW: Joe Holzbauer, James Andersh, LaVerne Andersh, Donald Andersh, Allen Andersh, Robert Andersh.





# Zoanian

## Staff



BACK ROW: Evelyn Carda, Ray Novak, Larry Peshek, Douglas Eggers, Richard Smith.  
FOURTH ROW: Maxine Koupal, Lois Woods, Kleta Uecker, Delores Zacharias, Jimmie Jones, Gerald Harrington, Joe Holzbauer.  
THIRD ROW: Eleanor Carda, Eileen Barta, Iris Hatwan, Iona Anderson, Bill Kafka, Marilyn Boyd, Florence DeNeui.  
SECOND ROW: Mrs. Gibbs-Advisor, Carol Yungbluth, Mavis Kuca.  
SEATED: Beverly Limoges, Florence Kostel, LaVerne Andersh, Betty Weber, Norman Gale, Thelma Jean Stone.



# Annual Staff

BACK ROW: Miss Hipple-Advisor, Betty Honomichl, Delores Zacharias, Eileen Barta, Donna Burian, Bill Kafka, Norman Gale, Darrel Limoges, Ray Rezac.  
THIRD ROW: Joyce Bradley, Joyce Ailts, Iris Hatwan, Thelma Jean Stone, Donna O'Connell, Marilyn Boyd, Florence DeNeui.  
SECOND ROW: Betty Weber, Carol Yungbluth, Hazel McCormick, Mavis Kuca, Beverly Limoges, Arbutus Davis, Genevieve Kopecky, Gerald Harrington.  
SEATED: Ray Novak, Iona Anderson, Jimmie Jones, Vine St. Pierre, LaVerne Andersh.

