



THE 1943



# RAIDER

VOLUME II

PUBLISHED BY

WAGNER HIGH SCHOOL

WAGNER, SOUTH DAKOTA



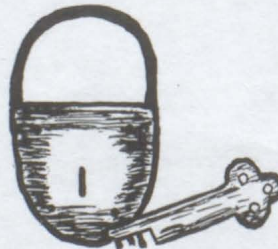
# FOREWORD

Small though it may be, inadequate though it may seem this book is an attempt to unfold your school days of 1942-43.

The multitude of small yet significant things that mean Wagner High to us could not be printed here. We have tried to picture fragments of the many-sided interests of our school.

That this book, in some small way, may serve as a key to unlock your trunk of pleasant memories and to make them more vivid and lasting is the mission of the

## 1943 RAIDER



"God gave us memories that we might have roses in December."

Shakespeare

# ADMINISTRATION



O. A. DeLONG, Superintendent

A.B. Dakota Wesleyan; M.A. University of Iowa; Candidate for Ed.D. at Colorado College of Education

Social Studies  
School Administrator  
Adviser, Student Council

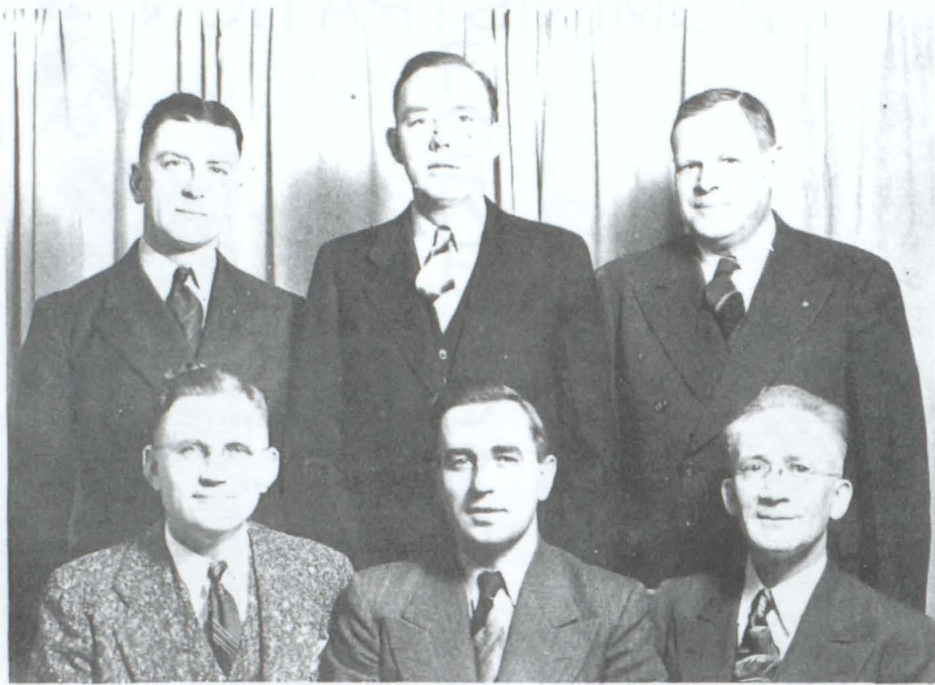


BLAKE WYMAN, Principal

A.B. Yankton College; B.M. Yankton College; Graduate Study, Northwestern University; Private Voice Study, New York City

Pre-Flight Aeronautics  
Director of Music  
Vocal Music  
Adviser, Social Committee  
Sponsor, Senior Class





## BOARD OF EDUCATION

*Front row:* N. Neilson, R. Cihak-Treas., R. Conlon  
*Back row:* E. Stedronsky, T. Duggan, W. Frei, Pres.  
*Unseen:* F. Nider, Clerk



## GRADE FACULTY

Betty Padrnos, Mildred Gelston, O. A. DeLong-Supt., Beverly Boden,  
Harriet Long, Frances Crimmins

# HIGH SCHOOL FACULTY

**MRS. EDNA LUNDY**

A.B. Augustana College  
Speech, English; Director,  
Dramatics



**EDNA OLSON**

A.B. Yankton College  
Science; Assistant Declama-  
tion; Sponsor, Eighth Grade

**WILLIAM JACKSON**

B.S. Ag College, University of  
Wisconsin; M.S. State College,  
Fargo, N. D.; Graduate Study  
South Dakota State College  
Agriculture; Shop; Physics;  
Adviser, F.F.A., Boy Scouts;  
Sponsor, Sophomore Class



**AMY BROWN**

B.S. South Dakota State College;  
Graduate Study, University of  
Wisconsin; Private Study, Col.  
V. C. Wakler, Los Angeles  
Mathematics; Director, Instru-  
mental Music; Adviser, Pep  
Squad

**MRS. HELEN STEKLY**

South Dakota State College, two  
years; Yankton College, one  
year; Mitchell Business College  
Junior High Mathematics;  
English  
Adviser, G. A. A.; Sponsor,  
Freshman Class



**MRS. VIRGINIA WILLIAMSON**

B.S. South Dakota State College  
Homemaking Education; Adviser,  
Wa-Se-Co Club; Sponsor, Junior-  
Senior Banquet

**MRS. GERTRUDE WYMAN**

*Part Time Instructor*

A.B. University of South Dakota;  
Graduate Study, University of  
Chicago, University of Southern  
California, University of South  
Dakota  
English; Journalism  
Adviser, Publications- The  
Wagner Zoanian and Raider



**MARGARET ROSSMAN**

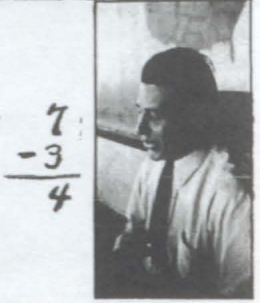
A.B. Yankton College; Graduate  
Study, University of Colorado,  
University of South Dakota,  
National Business Training  
School  
Commercial Subjects; Treasurer,  
Student Activity Fund; Sponsor,  
Seventh Grade

**LEONARD RAMSDELL**

B.S. University of South  
Dakota  
Social Studies, Physical  
Education Coach, Boys' Ath-  
letics; Sponsor, Junior Class



C  
L  
A  
S  
S  
E  
S



$$\begin{array}{r} 7 \\ -3 \\ \hline 4 \end{array}$$



$$\begin{array}{r} 3 \\ +3 \\ \hline 6 \end{array}$$





# SENIORS



**PAULINE ANDERSON**

*'She wields a mean quill'*

G.A.A. 1-2-3; Wa-Se-Co 1-2-3; Declamation 1-2-3-4; Debate 1-2; Play production staff 2; Pep Squad 2-3; Zoanian staff 2-3, Editor 4; Raider staff 3, Ass't Editor 4; "There Goes the Bride" 3; "Drums of Death" 3; "The Closed Door" 4; Class Vice-Pres. 4; Student Council 4; Social Committee Vice-Pres. 4.

**DONNA BOOMER**

*'Just a farmer at heart'*

G.A.A. 2; Mixed Chorus 2-3-4; Girls' Glee Club 2-3, Pres. 4; Girls' Small Ensemble 3-4; Zoanian staff 4; Raider staff 4.

**MILDRED BOUSKA**

*'She looks so quiet and demure but then I wouldn't be too sure'*

Pep Squad 1-2-3, Vice-Pres. 4; Wa-Se-Co 1-2-3; G.A.A. 2-3; Vice-Pres. 4; Play production staff 3-4; Zoanian staff 4; Declamation 4; Library ass't 4.

**GEORGIA BRISCOE**

*'Don't tell a soul, but I've got a new case'*

G.A.A. 1-2; Pep Squad 3-4; Wa-Se-Co 2; Play production staff 3; Zoanian staff 3-4.

**JEANNE COUGHLIN**

*'I know lots, but I can't think of it'*

Wa-Se-Co 1-2; Pep Squad 2-3, Cheer Leader 4; Band 2-3; Treas. 4; Zoanian staff 2-4; Play production staff 2; Pep Band 3-4; Student Council Sec. 4; Raider staff 4; Declamation 4; "The Closed Door" 4; "Girl Shy" 4.

**GLORIA CRISMAN**

*'She's right in step when it comes to pep'*

G.A.A. 1-2-3-4, Pres. 4; Wa-Se-Co 1-2-3; Declamation 1-2-3-4; Band 2-3-4; Pep Band 2-3-4; Zoanian staff 1-3-4; Production staff 4; Raider staff 4; Program Committee 4; Pep Squad 3, Cheer Leader 4; "The Closed Door" 4; "Girl Shy" 4; Saxophone Solo 3-4; Saxophone Trio 3-4.

**CLAYTON FILLAU**

*'He can forget the girls, but the girls can't forget him'*

Dante High School 1-2; Basketball 1-2-3-4; Baseball 1-2-3-4; Track 3-4; "W" Club 3-4; Saxophone Trio 4; Band 3-4; Zoanian staff 4.

**JUSTINE KALDA**

*'Beware of her giggle; it's contagious'*

G.A.A. 1-2; Pep Squad 1, twirler 3; Wa-Se-Co 1-2; Band 1-2-3-4; Class Vice-Pres. 1; Zoanian staff 1-3-4; "Remember the Day" 1; "Spring Fever" 2; Pep Band 2-3; Play production staff 3; Class Sec. & Treas. 3-4; Drum Majorette 3-4; Social Committee 4; Raider staff 4; Vocal Accompanist 3-4; Homecoming Queen 4.





**JOHN KELSO**

*He was born with wisdom teeth*

Basketball 1; Debate 1; Student Council 2-3-4; Glee Club 2, Vice-Pres. 3, Pres. 4; Mixed Chorus 2, Pres. 3, Vice-Pres. 4; "The Night of January 16th" 2; "There Goes the Bride" 3; "Drums of Death" 3; "The Closed Door" 4; "Girl Shy" 4; Boys' Ensemble 3-4; Mixed Ensemble 3-4; Vocal Solo 3-4; Class Pres. 4; Zoanian staff 4; Raider staff 4.

**DELORES MCGUIRE**

*'She's a "whizz" at the typewriter'*

G.A.A. 1-2; Wa-Se-Co 2-3; Band 2-3-4; Pep Squad 2-3, Sec. & Treas. 4; Pep Band 4; Zoanian staff 4; Raider staff 4; Library ass't 4.



**HARRY LARSON**

*'Someone must be serious in a world like ours'*

F.F.A. 1-2-3.

**BILLY MCGUIRE**

*'Hold the fort--I'm coming'*

Dante High School 1-2; Basketball 1-2-3-4; Baseball 1-2-3-4; Track 3; "W" Club 3-4.



**ARLENE NOVAK**

*'Silent and good natured'*

G.A.A. 2; Pep Squad 2-3-4; Wa-Se-Co 2-4; Zoanian staff 4; Raider staff 4; Mixed Chorus 3; Library assistant 2.



**THELMA NEWMAN**

*'Two large brown eyes--and a smile--Beware!!'*

G.A.A. 1-2-4; Pep Squad 2, twirler 3-4; Class Sec. & Treas. 2; Student Council, Sec. 3; Social Committee 4; Zoanian 2-4, Editor 3; Raider staff, Editor 4; Play production staff 1-2-3-4; Debate 1-2; Glee Club 1-3-4; Mixed Ensemble 3; Mixed Chorus 1-3-4; Girls' Ensemble 3-4; "There Goes the Bride" 3; "Girl Shy" 4; Band 4; Drum Major-ette 3-4; Wa-Se-Co 1-2.



**BETTY KRSTNAK**

*'Only weeds grow tall'*

Debate 1-2; Declamation 2-3-4; G.A.A. 2; Wa-Se-Co 2-3-4; Glee Club 3-4; Mixed Chorus 4; Play production staff 3-4.



**BETTY OWINGS**

*'Not too quiet, not too gay; yet she has a charming way'*

G.A.A. 1-2; Pep Squad 1-2, twirler 3-4; Wa-Se-Co Sec. 2; Class Pres. 2; Zoanian staff 2-3-4; Raider staff 4; Play production staff 2-3-4; Glee Club 3-4; Mixed Chorus 4; Drum Major-ette 3-4; Personal attendant to Queen 4.





DONALD REHWALDT

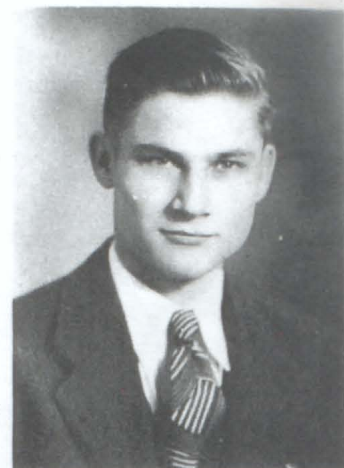
*'Well, boys, it's done like this'*

Basketball 4; F.F.A. 2-3; "W" Club 4; Program Committee 3-4; Social Committee 3-4; Play production staff 2-3-4; Boys' Glee Club 1-2-3-4; Mixed Chorus 1-2-3-4; Boys' Ensemble 3; Mixed Ensemble 4; Personal attendant to King 4.

LEO REZAC

*'Hope for the best, expect the worst, and take what comes'*

Lake Andes High School 1-2-3-(Half year); F.F.A. 3, Pres. 4; Glee Club 1-2.



WAYNE SCHROEDER

*'He's the answer to a maiden's prayer'*

Football 2-3-4; All Conference tackle 4; Track 4; F.F.A. 2-3; "W" Club, Pres. 4; Homecoming King 4.

ROMAINE VERBA

*'I wish I were a pilot with a girl on every cloud'*

Dante High School 1-2; Basketball 1-2-3-4; Track 4; Baseball 1-2; "W" Club 4; Zoanian staff 4.



DONALD VOGEL

*'He needs no eulogy; he speaks for himself'*

Student Pres. 4; Track 3-4; Baseball 1-2-3-4; F.F.A. 1; "W" Club 4; Student Council 4; Program Committee 4; Boxing 3-4; Zoanian staff 3-4; Cheer Leader 3.

RONNIE VOGEL

*'He came a stranger; he remains a friend'*

Tripp High School 1-2; Basketball 1-2-3-4; Track 4; "W" Club 4.



LESTER WEBER

*'Put your trouble in a pocket with a hole in it'*

Football 1; F.F.A. 2, Vice-Pres. 3, Reporter 4; Class Vice-Pres. 3; Social Committee 3; Zoanian staff 4; Play production staff 3; Personal attendant to the King.

HOWARD WHITNEY

*'An argumentative genius'*

Delmont High School 1-2; Declamation 4; Football 4; Raider staff 4.





LaVONNE WOODS

*'If you would be loved, be lovable'*  
G.A.A. 1-2-4; Pep Squad 1-2, twirler 3-4; Wa-  
Se-Co district secretary 1-2; Zoanian staff  
2-3-4; Play production staff 2-3-4; Glee Club 4;  
Mixed Chorus 4; Drum Majorette 3-4; Raider staff  
4; Personal attendant to Queen.

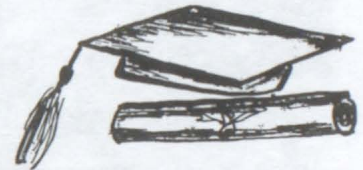


MR. WYMAN  
Sponsor

DAYS TO REMEMBER

by Pauline Anderson

The class of nineteen forty three,  
Facing a future most unsure  
Will not forget their high school days  
So happy and secure;  
Memories of busy days  
All filled with work and fun,  
Of teachers kind, of friends galore  
And games and parties often.  
Farewell, dear old Wagner High,  
Though fame for us awaits-  
It is with pangs of deep regret  
We close these childhood gates.



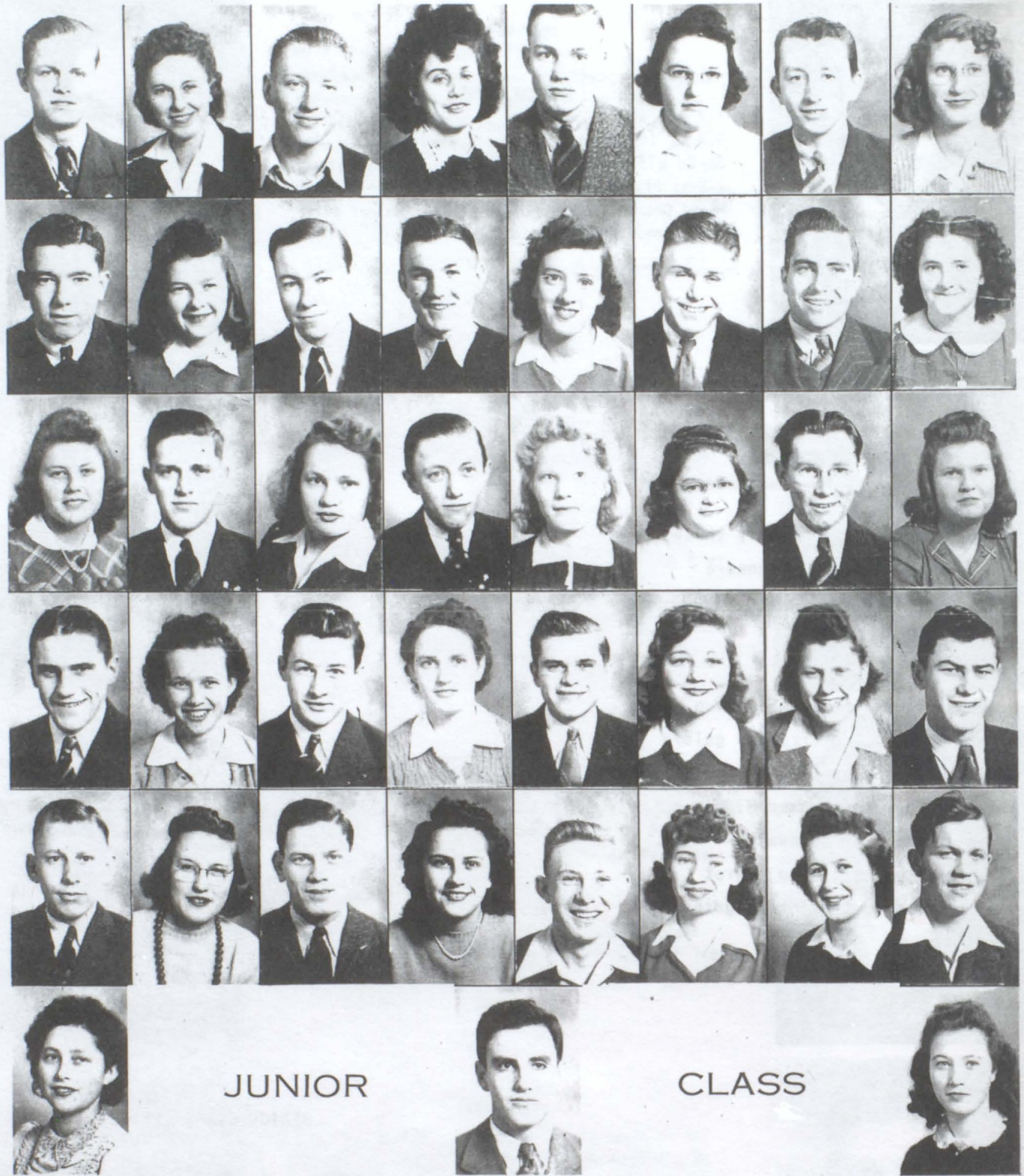
SENIOR CLASS OFFICERS

"Farewell, good friends, nor shall we grieve,  
We always take the best of what we leave;  
Life takes away the outward part  
And leaves the essence in the heart."

Driscoll



J. Kelso, Pres.; P. Anderson, Vice-Pres.;  
J. Kalda, Sec.-Treas.



JUNIOR

CLASS

- Top row:* Charles Beemer, Majorie Bridge, Dale Bures, Clara Burgr, Verlin Cederburg, Leona Cihak, James Cimpl, Shirley Cork.
- Second row:* Roy Cotton, Elizabeth Coughlin, Robert Crowley, John Fredrich, Mary Gilreath, Kenneth Grim, Raymond Harrington, Annabelle Hawkey.
- Third row:* Dorothy Hedegaard, Eugene Homolka, Zella Kelly, Robert Krcil, Lucille Larson, Elaine Mazourek, Stanley Melmer, Faye Miller.
- Fourth row:* Ted Morgan, Wanda O'Connell, Robert Peshek, Betty Peterson, Arthur Rezac, Delores Rohla, Alvina Rittel, Robert Seiner.
- Fifth row:* Dwaine Schuldt, LaVonne Schuldt, Mickey Skelly, Jean Stedronsky, Robert Schreiber, Mae Schulz, Joyce Thaler, Donald Troxell.
- Sixth row:* Lila Weber, Harry Weinstein, LaVelle Woods.
- Unseen:* Darrell Broz, Donald Gilreath.



## SOPHOMORE CLASS

*Front row:* Janice Ehrisman, Vivian Cederburg, Violet Cederburg, Shirley McGuire, Bonnie Briscoe, Mary Efta, Phyllis Gross, Darlene Mundt, DeAldia Harrington, Eileen Gross, Mr. Jackson-Sponsor.

*Second row:* Ralph Vogel, Kenneth Crisman, Albin Cuka, LaFaye Newman, Arlene Jespersen, Jo Ann Pigsley, Mary Lou Cournoyer, Robert Kafka, Norman Thaler.

*Back row:* Billy Coles, Dick Beemer, Carl Smith, Floyd Gross, Adolph Pesicka, Dale Hall, Keith Schroeder, Kenneth Doty, Clifford Powers, Joe Trantina, Leo Sadler, Herbert Eschliman, Donald Novak.

### JUNIOR CLASS OFFICERS



J. Stedronsky, Pres.; J. Thaler, Vice-Pres.; R. Schrieber, Sec.; M. Gilreath, Treas.

### SOPHOMORE CLASS OFFICERS



K. Schroeder, Pres.; L. Sadler, Sec.-Treas.



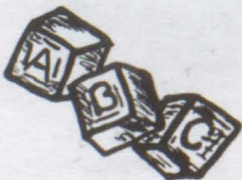
## FRESHMAN CLASS

- Front row:* Connie Gilreath, Ruth Black, Helen Smith, Frances Crowley, Angeline Zacharias, Rose Schuldt, Guriene Heida, Delores Whitney, Mildred Uecker, Mrs. Stekly-Sponsor.
- Second row:* Norma Zolnowsky, Leatta Yungbluth, Wilma Gibson, Betty Novak, Maxine Mitchell, Rose Cournoyer, Ruth Pigsley.
- Third row:* Robert Conlon, James Skelly, Harold Harrington, Gene Rehwaldt, Norman Woods, Joseph Stedronsky, Howard Larson, Waldon Eggers.
- Back row:* Harold McCormick, Vernon Bures, Gerald Harrington, Richard Anderson, Charles Olson, Ben Honomichl, Dick Barta, Waldon Broz, Billy Rohla.

## FRESHMAN CLASS OFFICERS



J. Skelly, Pres.; B. Rohla, Vice-Pres.;  
R. Schuldt, Sec.-Treas.







## SEVENTH GRADE

**Front row:** Jewell Pekas, Beverly Limoges, Florence DeNeui, Bonnie Bucholz, Corrine Fergen, Donna Burian, Eileen Barta, Mavis Waterman, Marilyn Boyd, Luella Gross.

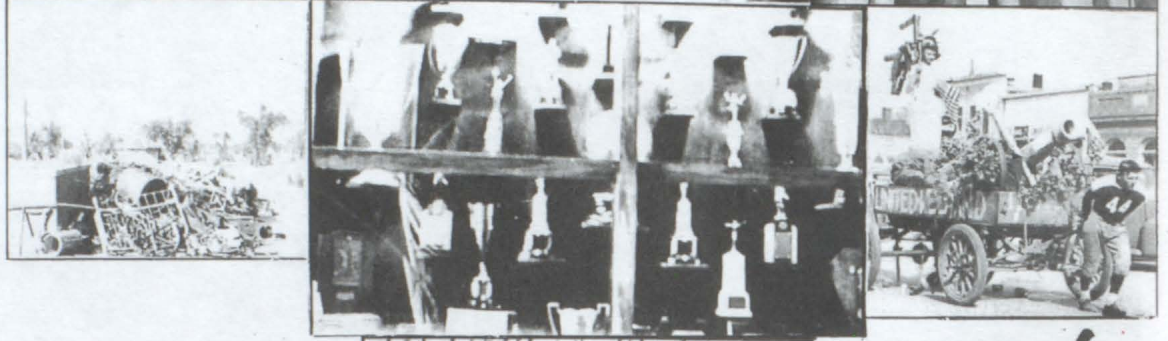
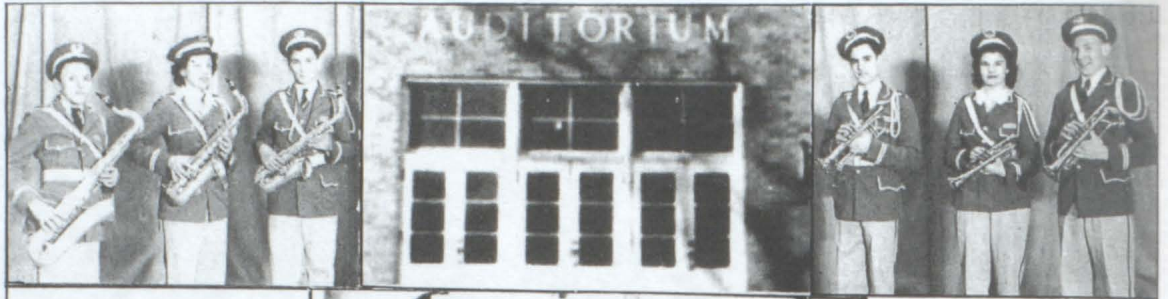
**Back row:** Gerald Harrington, Kenneth Skelly, Larry Peshek, Darrell DeLong, Leo Flynn, John Hedegaard, Clifford Hoffman, Jimmie Jones, Milo Krsnak, Richard Smith, Nelson McCormick, Miss Rossman-Sponsor.

## EIGHTH GRADE

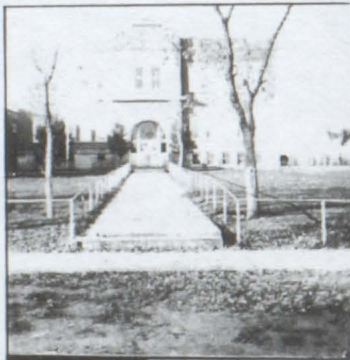


**Front row:** Dorothy Coles, Violet Rovaart, Gwen Cork, Ina Schulz, Gladys Beemer, Reta Justice, Margaret DeNeui, Theresa Scheuren.

**Back row:** Waldon Stedronsky, Robert Geidd, Vine St. Pierre, Edward Mitchell, Tommy Wilson, Ray Bridge, Billy Krsnak, James Vogel, Miss Olson-Sponsor.



ACTIVITIES





FOOTBALL

SQUAD



*Front row:* H. Whitney, J. Jones, K. Skelly, D. DeLong, R. Bridge, G. Meyers, R. Smith, W. Eggers.  
*Second row:* T. Pesicka, W. Bridge, R. Anderson, R. Schreiber, H. Harrington, V. Cederburg, K. Crisman, J. Skelly, D. Hall, K. Schroeder, P. Picotte, A. Cuka.  
*Back row:* R. Harrington, M. Skelly, J. Picotte, K. Picotte, R. Seiner, K. Doty, J. Fredrich, L. Sadler, K. Grim, W. Schroeder, T. Morgan, Mr. Ramsdell-Coach.



W. SCHROEDER  
L. Tackle  
All Conference



M. SKELLY  
R. Half  
All Conference

## S.E.S.D. CO-CHAMPS

HOLDERS OF

## STRATOSPHERE TROPHY



K. GRIM  
L. Guard  
All Conference



R. HARRINGTON  
L. Half  
All Conference



T. MORGAN  
L. End



R. SEINER  
R. End



K. DOTY  
R. Tackle



L. SADLER  
Center



J. FREDRICH  
R. Guard

Unseen: J. Picotte, Fullback, All Conference; K. Picotte, L. Half.



## "A" BASKETBALL SQUAD

R. Harrington, R. Schreiber, M. Skelly, R. Seiner, T. Morgan, R. Vogel

# DISTRICT AND SUB-REGIONAL CHAMPS



## ENTIRE BASKETBALL SQUAD

*Front row:* R. Schreiber, M. Skelly, R. Seiner, R. Vogel, T. Morgan, R. Harrington, Mr. Ramsdell-Coach.  
*Second row:* C. Fillaus, D. Schuldt, R. Verba, G. Rehwaldt, J. Cimpl, H. Weinstein, L. Sadler.  
*Back row:* K. Grim, J. Fredrich, C. Smith, A. Pesicka, V. Cederburg, B. McGuire, D. Novak, K. Crisman, J. Skelly.



## JR. HIGH BASKETBALL SQUAD

*Front row:* W. Stedronsky, T. Wilson, K. Skelly, J. Vogel.  
*Back row:* M. Skelly-Coach, D. Barta, J. Stedronsky, R. Conlon, V. St. Pierre, W. Bridge.



## TRACK SQUAD

*Front row:* R. Harrington, K. Grim, K. Doty, R. Vogel, T. Morgan, M. Skelly, L. Sadler, Mr. Ramsdell-Coach.  
*Back row:* K. Crisman, B. McGuire, A. Pesicka, R. Verba, C. Fillaus, V. Cederburg, J. Skelly.

"W."  
C  
L  
U  
B



*Front row:* K. Grim, M. Skelly, T. Morgan, R. Seiner, H. Weinstein, V. Cederburg, L. Sadler, Mr. Ramsdell-Adviser.  
*Second row:* R. Harrington, J. Fredrich, A. Pesicka, J. Cimpl, R. Verba, W. Schroeder, K. Doty, C. Fillaus, J. Skelly.  
*Back row:* K. Crisman, D. Barta, B. McGuire, D. Schuldt, K. Schroeder, C. Smith, D. Vogel, R. Vogel.



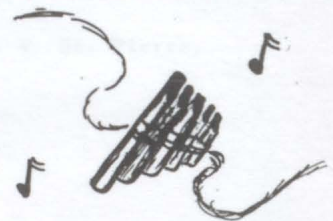
G.  
A.  
A.

*Front row:* H. Smith, G. Beemer, S. McGuire, D. Hedegaard, P. Gross, G. Heida, G. Cork, D. Rohla, D. Coles, Mrs. Stekly-Adviser.  
*Back row:* C. Gilreath, L. Schuldt, R. Justice, S. Cork, M. Mitchell, G. Crisman, M. Bouska, E. Gross, I. Schulz, B. Novak, M. DeNeui, T. Scheuren.

MIXED CHORUS



**Front row:** B. Krsnak, J. Kalda-Accompanist, M. Mitchell, F. Crowley, C. Barta, R. Peshek, H. Weinstein, K. Grim, D. Boomer, W. O'Connell, S. Cork.  
**Second row:** Mr. Wyman-Director, G. Cork, M. Bridge, M. Gilreath, C. Burgr, T. Wilson, C. Olson, F. Gross, R. Schuldt, D. Rohla, J. Stedronsky, F. Miller.  
**Third row:** R. Pigsley, G. Beemer, G. Heida, H. Smith, R. Cournoyer, J. Kelso, T. Morgan, L. Sadler, J. Trantina, T. Newman, L. Woods, J. Thaler.  
**Back row:** B. Owings, Z. Kelly, R. Crowley, C. Smith, D. Novak, D. Beemer, S. Melmer, D. Rehwaldt, R. Seiner, G. Homolka, A. Rezac, H. Eschliman, E. Mitchell.



MIXED ENSEMBLE

J. Kelso, S. Melmer, G. Beemer, G. Heida, J. Thaler, J. Stedronsky, H. Weinstein, K. Grim.



BOYS' ENSEMBLE

R. Crowley, J. Kelso, T. Morgan, S. Melmer, G. Homolka, H. Weinstein, H. Eschliman, K. Grim.



GIRLS' ENSEMBLE

G. Beemer, M. Mitchell, G. Heida, D. Boomer, T. Newman, J. Stedronsky, S. Cork.





## BOYS' GLEE CLUB

*Front row:* T. Wilson, R. Vogel, C. Smith, F. Gross, C. Barta, D. Schuldt, H. Weinstein, H. Eschliman, Mr. Wyman-Director.  
*Second row:* D. Beemer, J. Kelso, C. Olson, A. Rezac, T. Morgan, R. Seiner, G. Homolka, K. Grim.  
*Back row:* R. Crowley, R. Peshek, S. Melmer, D. Rehwaldt, J. Trantina, L. Sadler, E. Mitchell.



## GIRLS' GLEE CLUB

*Front row:* B. Krsnak, J. Kalda-Accompanist, M. Mitchell, F. Crowley, L. Larson, D. Boomer, W. O'Connell, R. Schuldt, Mr. Wyman-Director.  
*Second row:* G. Cork, M. Bridge, M. Gilreath, C. Burgr, F. Miller, D. Rohla, J. Thaler, H. Smith.  
*Back row:* R. Pigsley, G. Beemer, R. Cournoyer, G. Heida, Z. Kelly, B. Owings, T. Newman, L. Woods, J. Stedronsky, S. Cork.



B  
A  
N  
D



*Front row:* G. Heida, B. Krsnak, M. Boyd, K. Connolly, S. Melmer.  
*Second row:* Miss Brown-Director, J. Kalda, J. Stedronsky, C. Gilreath, L. Woods, B. Owings, T. Newman, S. Cork, J. Coughlin, V. Stedronsky.  
*Third row:* B. Limoges, T. Scheuren, H. Smith, M. Mitchell, L. Larson, Z. Kelly, L. Schuldt.  
*Fourth row:* J. Stedronsky, L. Cihak, R. Krcil, C. Fillaus, G. Crisman, H. Weinstein, R. Schreiber, R. Schuldt, D. McGuire, E. Coughlin.  
*Back row:* G. Beemer, W. Stedronsky, D. DeLong, C. Beemer, M. Schulz, G. Homolka, T. Morgan, M. Gilreath, R. Justice.



PEP BAND



*Front row:* H. Heida, Z. Kelly, S. Cork, J. Coughlin, V. Stedronsky, S. Melmer, Miss Brown-Director.  
*Second row:* Jean Stedronsky, J. Stedronsky, D. McGuire, E. Coughlin.  
*Third row:* G. Beemer, L. Cihak, G. Crisman, H. Weinstein, R. Schreiber, R. Schuldt, R. Justice.  
*Back row:* M. Mitchell, G. Homolka, T. Morgan.



H. Weinstein, R. Schreiber, T. Morgan, G. Homolka, S. Cork, M. Mitchell, R. Justice, V. Stedronsky.

BRASS ENSEMBLE



## PEP SQUAD

*Front row:* G. Crisman, C. Gilreath, J. Stedronsky, L. Woods, T. Newman, B. Owings, M. Gilreath, M. Mitchell, J. Coughlin, *Mascots:* M. Connolly, J. Broz, C. Kostel.  
*Second row:* Miss Brown-Director, W. Gibson, A. Jespersen, V. Cederburg, S. Cork, E. Mazourek, L. Cihak, E. Gross, D. Harrington, J. Ehrisman, V. Cederburg, G. Heida.  
*Third row:* N. Zolnowsky, R. Black, A. Novak, D. Whitney, G. Briscoe, A. Zacharias, R. Cournoyer, D. Rohla, E. Coughlin, L. Newman, L. Schuldt.  
*Back row:* J. Pigsley, D. Mundt, B. Briscoe, L. Woods, D. McGuire, R. Schuldt, S. McGuire, M. Bouska, P. Gross, L. Weber.



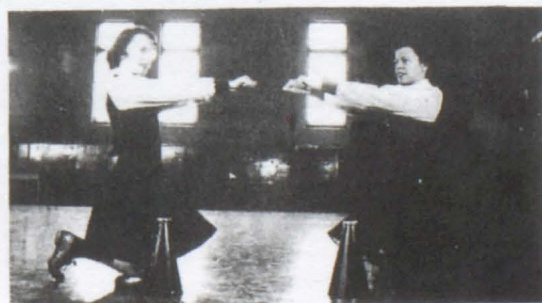
## TWIRLERS

*Mascots:* M. Connolly, J. Broz, C. Kostel, M. Gilreath, M. Mitchell, J. Stedronsky, T. Newman, L. Woods, B. Owings, C. Gilreath.



## CHEERLEADERS

Jeanne Coughlin, Gloria Crisman





*Seated:* J.Cimpl, H. Weinstein, D.Vogel, Supt.DeLong-Adviser, J.Coughlin, B.Coughlin.  
*Standing:* J.Kelso, V. St. Pierre, J.Skelly, C.Olson, R.Vogel, M. Skelly, P.Anderson, W.O'Connell, J.Stedronsky, L.Schuldt, V. Cederburg, L.Cihak.



## STUDENT COUNCIL



*Seated:* G. Heida, J. Stedronsky, W. O'Connell, J. Kalda,  
*Standing:* J. Pigsley, T.Newman, I. Schulz, H.Smith, G. Homolka, R.Schreiber, T. Morgan, Mr.Wyman-Adviser, D. Vogel, P. Anderson, R. Conlon, T. Wilson.

## SOCIAL COUNCIL



H. Whitney, R. Schuldt, S. Melmer, M. Bouska, G. Crisman, J. Stedronsky, R. Vogel, P. Anderson

## DECLAMATION



## "THE CLOSED DOOR"

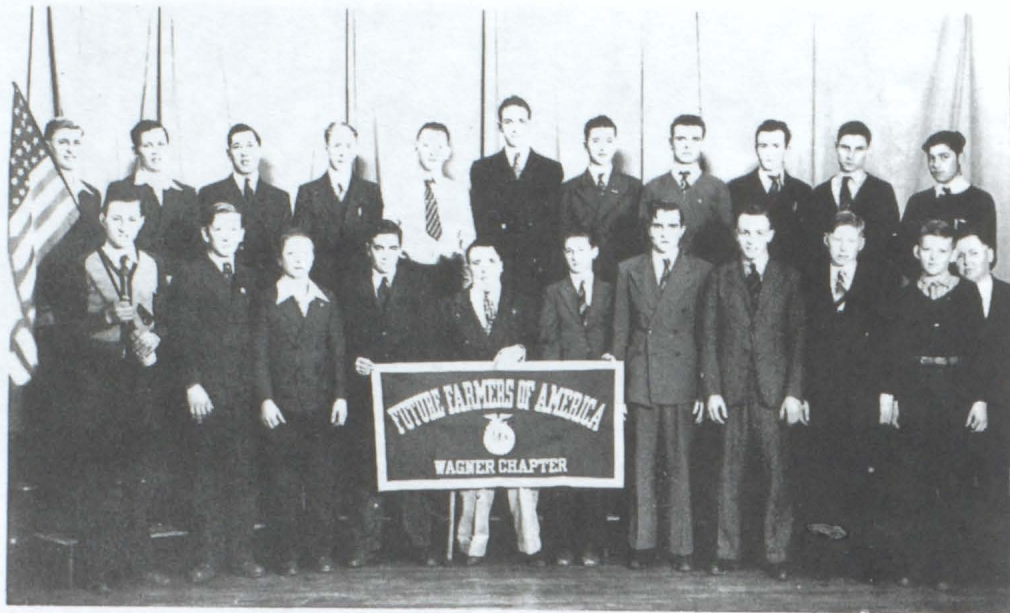
G. Crisman, R. Schreiber, R. Schuldt, H. Weinstein, P. Anderson, J. Kelso, J. Coughlin, R. Peshek, J. Thaler.



## "GIRL SHY"

S. Melmer, J. Kelso, K. Grim, R. Schreiber, G. Heida, J. Stedronsky, R. Schuldt, T. Morgan, G. Crisman, T. Newman, A. Rezac, J. Coughlin.





## F. A. A.

*Front row:* A. Cuka, B. Honomichl, K. Crisman, G. Harrington, R. Kafka, D. Barta, H. Harrington, V. Cederburg, H. Larson, W. Eggers, Mr. Jackson-Adviser.

*Top row:* D. Novak, D. Troxell, L. Weber, D. Hall, D. Bures, G. Rehwaldt, C. Powers, K. Doty, N. Woods, L. Rezac, R. Anderson.



## WA-SE-CO CLUB

*Front row:* Mrs. Williamson-Adviser, B. Krsnak, N. Zolnowsky, J. Ehrisman, F. Crowley, M. Cournoyer, D. Hedegaard, L. Cihak, R. Schuldt, M. Gilreath, G. Heida, V. Cederburg, A. Zacharias, M. Uecker, M. DeNeui.

*Second row:* V. Cederburg, W. Gibson, L. Yungbluth, V. Rovaart, G. Cork, G. Beemer, R. Cournoyer, L. Newman, C. Gilreath, T. Schejren.

*Third row:* R. Black, R. Pigsley, B. Novak, M. Efta, P. Gross, A. Jespersen, D. Mundt, D. Harrington.

*Back row:* D. Coles, H. Smith, A. Novak; E. Gross, S. McGuire, B. Briscoe, L. Woods, J. Pigsley, I. Schulz.

PUBLICATIONS



ZAONIAN

STAFF

**Standing:** G. Briscoe, N. Thaler, J. Kelso, C. Fillaus, M. Bouska, D. Vogel, L. Weber, R. Vogel, K. Schroeder, Z. Kelly, W. O'Connell, R. Verba, D. Boomer, J. Coughlin, J. Thaler, B. Owings, L. Schuldt, J. Stedronsky, J. Kalda, L. Woods, J. Skelly, D. McGuire.

**Sitting:** Mrs. Wyman-Adviser, T. Morgan, H. Eschliman, P. Anderson, T. Newman, R. Schreiber, G. Crisman, A. Novak. **Insert:** Pauline Anderson-Editor.



RAIDER

STAFF

**Standing:** J. Stedronsky, M. Cournoyer, Mrs. Wyman-Adviser, D. Boomer, B. Owings, A. Novak, J. Kalda.

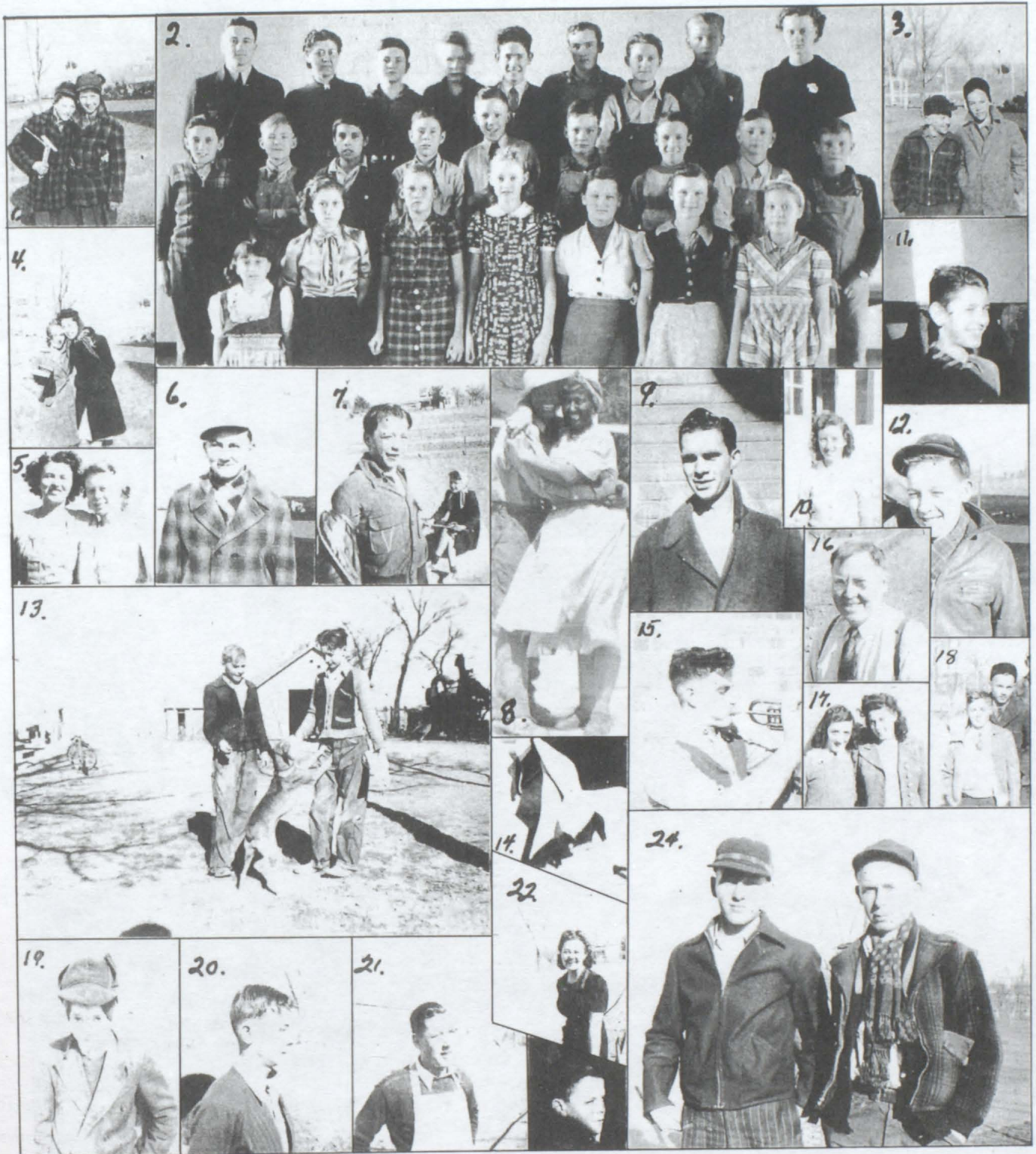
**Sitting:** G. Crisman, J. Kelso, J. Coughlin, T. Newman, P. Anderson, H. Whitney, L. Woods, D. McGuire. **Insert:** Thelma Newman-Editor.





1. Big feet! 2. Just friends. 3. Lila, Rosie, and Betty. 4. Little red school house. 5. No peeking allowed. 6. "Bivens." 7. Thaler and Burgr. 8. Paul. 9. Love bug? 10. Cletus Barta. 11. Mick and Jean. 12. Need some help? 13. Hum, what's this? 14. Water cold, girls? 15. A Gamble special? 16. Three chums. 17. Been swimming? 18. Scrap. 19. Farmerettes. 20. Joey, Bud, Doc. 21. Darrel Broz. 22. Norma and Max. 23. Krcil. 24. Just more green freshies. 25. Ouch! What feet!

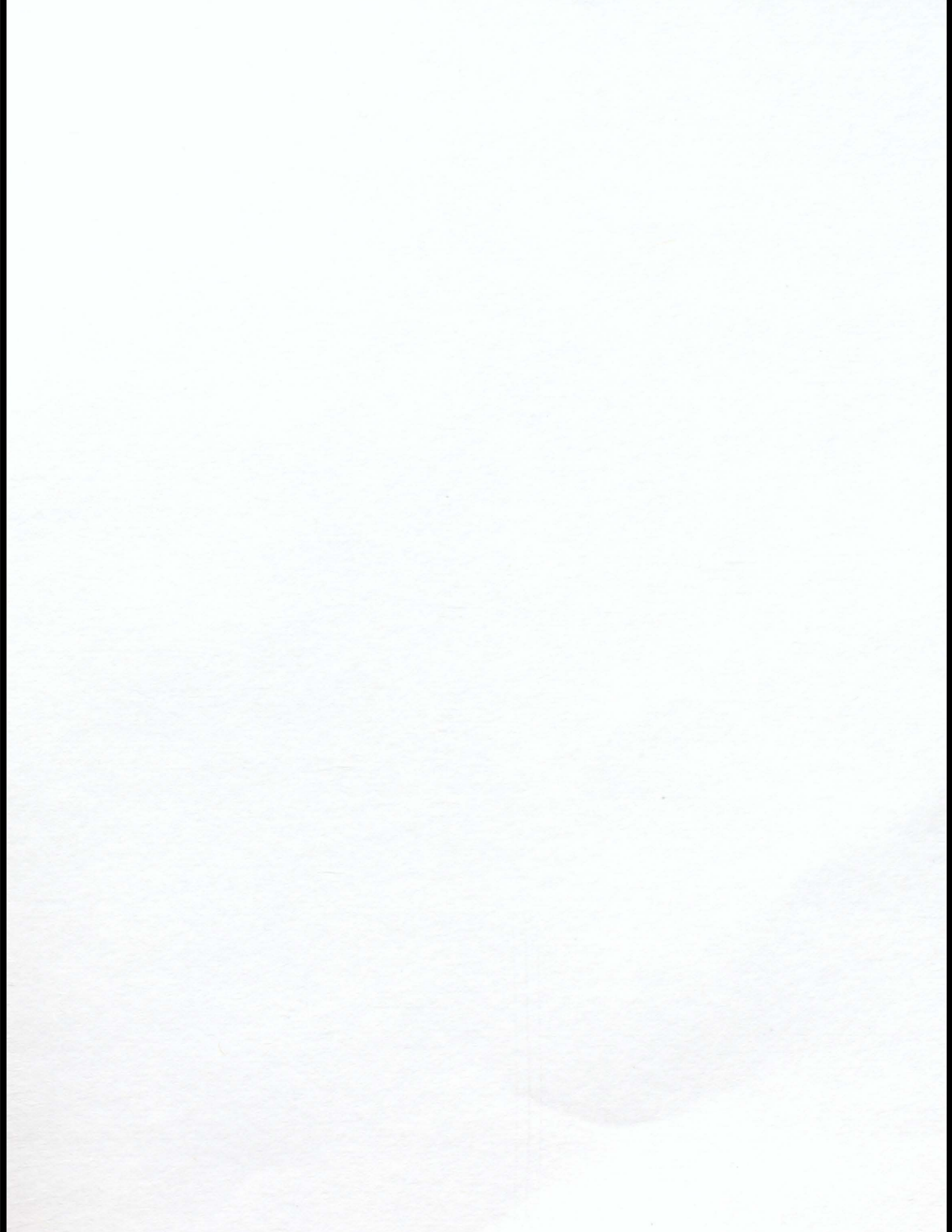




1. Buddies. 2. Seniors in 1939. 3. Krsnak and Wilson. 4. Freshies. 5. Heida and Smith. 6. Mamie. 7. Tarzan. 8. Uncle Tom and Lizza? Gloria and Marie. 9. Romeo. 10. Librarian. 11. What a smile! 12. Sun get in your eyes, Bill? 13. Bridge and Barta. 14. Looka' 'em legs. 15. Maestro Weinstein. 16. Cheer leader ???!! 17. Some more freshies. 18. Bridge and Eschlman. 19. McCormick. 20. Cletus Barta. 21. Future Farmer. 22. Miss Padrnos. 23. Hi, Kenney! 24. Two Dales.



1. Sweet and innocent. 2. Looks serious. 3. Daily duty. 4. Rams. 5. Leo. 6. Young America. 7. Junior gals. 8. DeAldia and Vi. 9. P. A. 10. Trox. 11. We three and a half. 12. Tsk! Tsk! 13. Gildersleeve. 14. Swede. 15. "H. B." 16. Are you pep peppy? 17. Peek-a-boo. 18. Touchdown. 19. Flo. 20. Ick. 21. Flynn. 22. Blow, wild wind, blow! 23. Well, you guys! 24. Crowley. 25. School's out.



*Faint, illegible handwriting in the top right corner.*